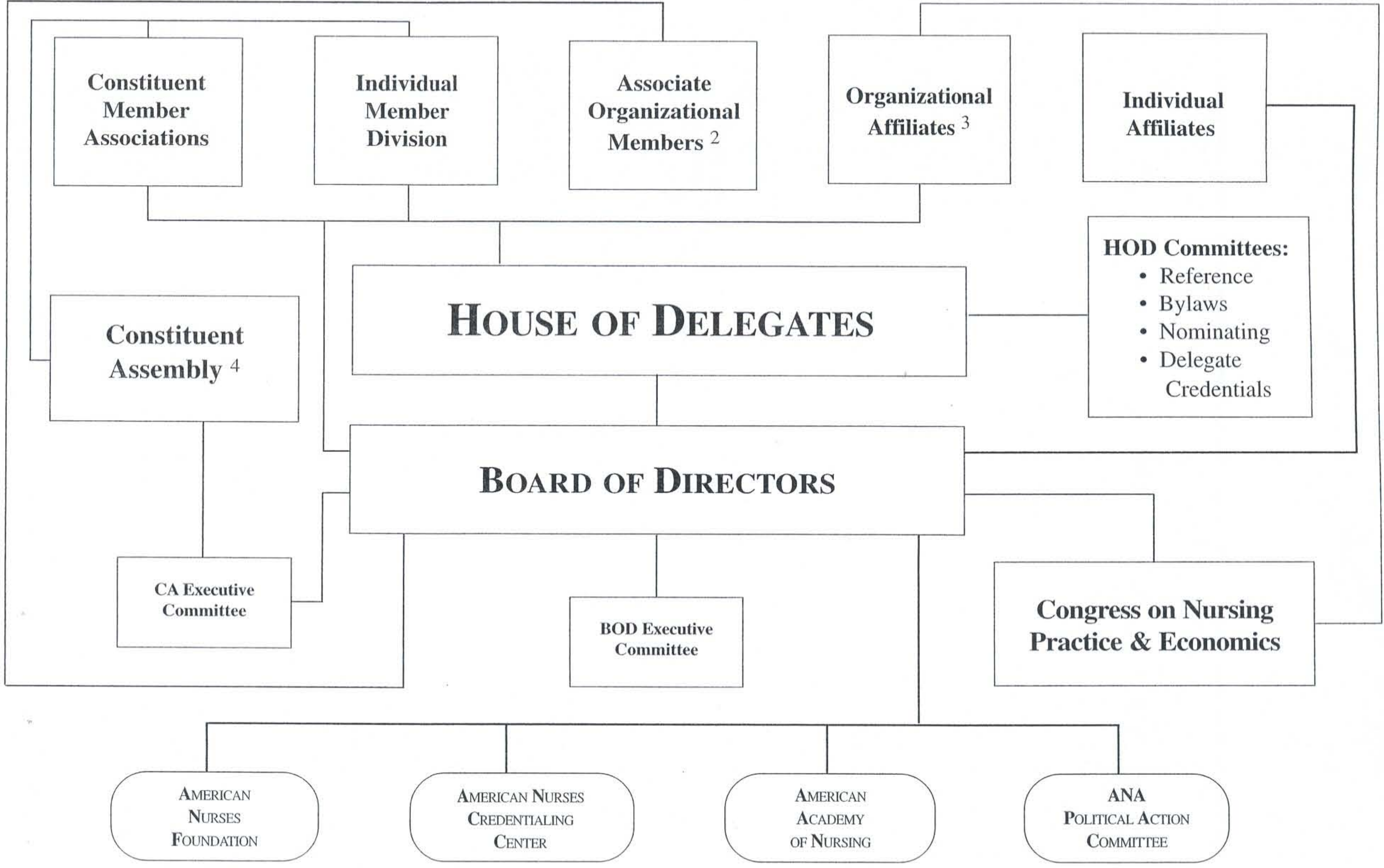


# ANA MEMBERS<sup>1</sup> AND AFFILIATES<sup>1</sup>



- HOD Committees:**
- Reference
  - Bylaws
  - Nominating
  - Delegate Credentials

1. While all lines show relationships, not all are the same.  
 2. Associate Organizational Member (AOM) presidents who are elected consistent with labor law are voting members of Board of Directors, House of Delegates (HOD). Other AOM presidents are liaisons to the BOD and have a courtesy seat at HOD with voice, but no vote.  
 3. Organizational Affiliates (OA) have one voting rep each at HOD; one liaison for all OAs at BOD.  
 4. Constituent Assembly (CA) chairperson is non-voting, ex-officio member of the Board of Directors (BOD).